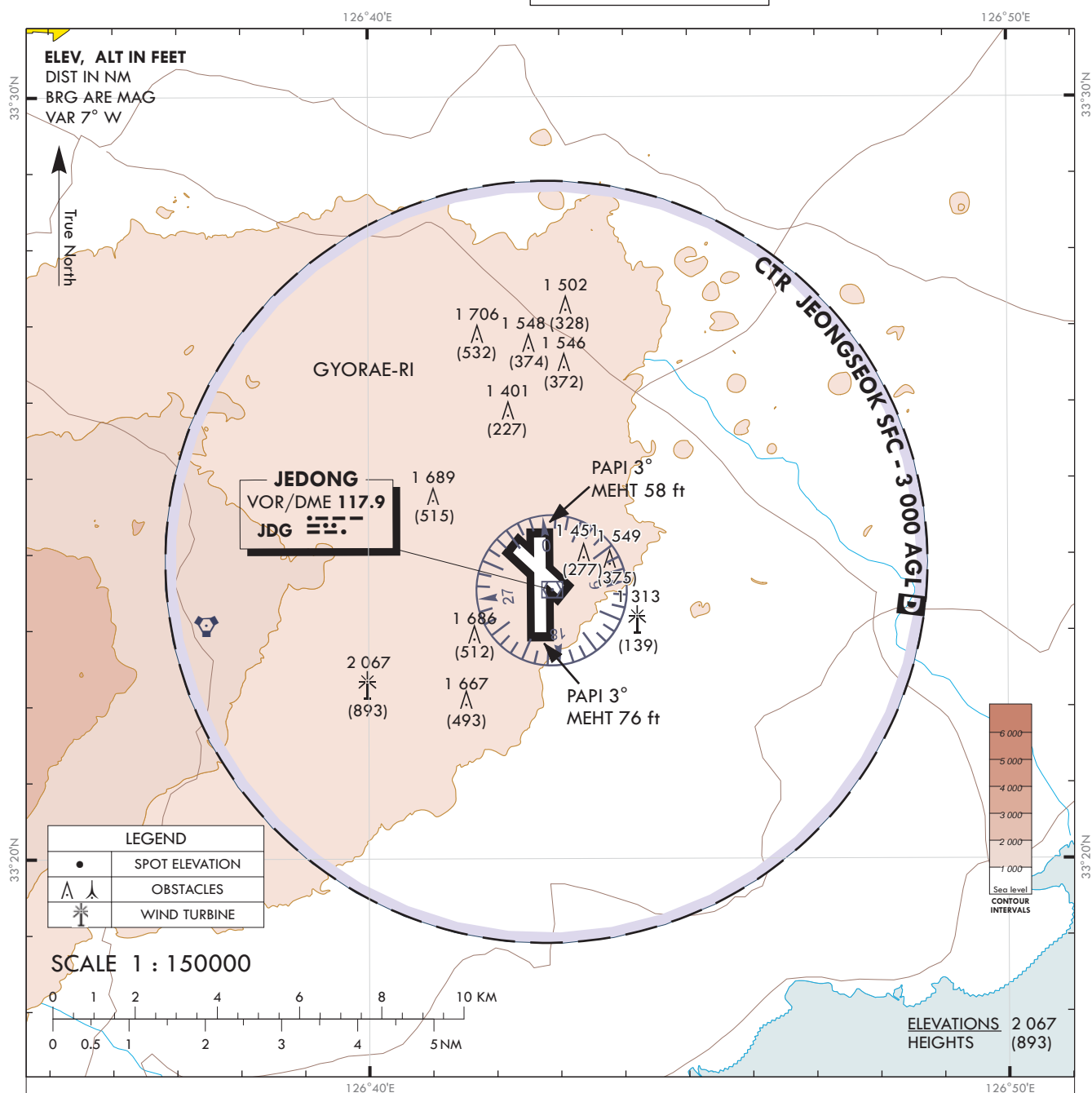


**VISUAL
APPROACH
CHART - ICAO**

AERODROME ELEV 1 174 ft
HEIGHTS RELATED TO AD ELEV

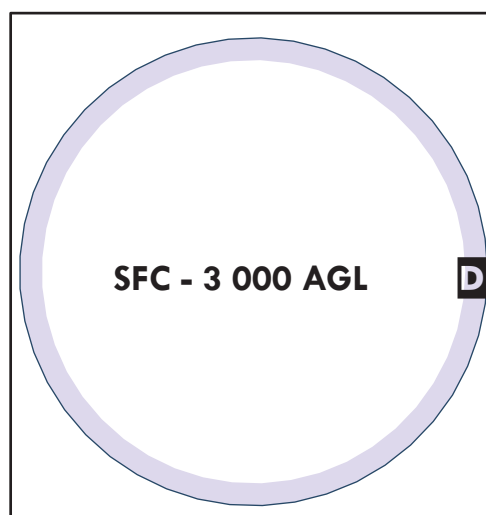
JEJU	APP	121.2
		124.05
JEONGSEOK	TWR	124.35

JEONGSEOK/Jeongseok



VISUAL APPROACH PROCEDURE

- Visual approach may be initiated by ATC (Jeju APP control) or approved upon pilot request on traffic permitting basis when :
 - Ceiling : At or above 500 ft plus MVA
 - Visibility : Not less than 5 km
 - circuit : East pattern only
- ATS airspace : Class D (Refer to ENR 2.1 - 7)



Change : Establishment of visual APCH chart for RKPD.

OFFICE OF CIVIL AVIATION

AIRAC AIP AMDT 5/24
Effective : 1600UTC 10 JUL 2024